

Hostels in IICT

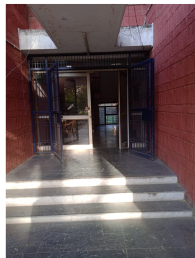
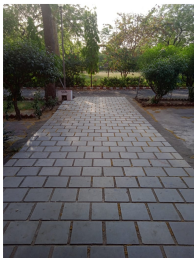
- There are mainly two hostels in the institute main campus.
- First is 'Vivekananda Hostel (V.H.)' for Boys students from 2nd to 4th year B.Tech..
- Second is 'Saraswati Bhawan (S.B.)' exclusively for Girls students from 2nd to 4th year B.Tech.
- In addition to these hostels, we have two Transit Hostels (T.H.).
- One is for first year Boys students, and another is for first year Girls students.

Vivekananda Hostel

Front and side view



Partial view of Saraswati Bhawan with T.H. (FYG)



Outer and inner view of Transit Hostel (FYB)



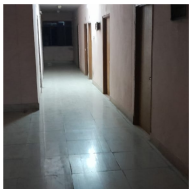
Hostel infrastructures

- Single, Double and Triple bed rooms are available in both the hostels.
- Each room contains at least one wooden bed of size 3 ft x 6 ft and one wooden table of size 3 ft x 2 ft.
- Wooden and plastic chairs.
- Wall almirah in each rooms.
- Common bathrooms and toilets for boys.
- Attached bathrooms and toilets for girls.

Facilities available

- 24X7 electric supply with power back-up.
- Sufficient water supply.
- Water purifiers with cooling system.
- Geyser facility.
- Gym with latest equipment.
- Notice board for information sharing.
- Wi-fi facility.
- TV room for entertainment.
- Table Tennis and Carrom for games activity.

Some glimpse of facilities and corridors



Hostel capacity & occupancy

Total: V.H.= 108, S.B.= 40, T.H.(FYB)= 30, T.H.(FYG)= 16.

Hostels →	V.H.	S.B.	Transit H.(FYB)	Transit H.(FYG)
Triple bed	NIL	08	06	NIL
Double bed	43	07	06	08
Single bed	22	02	00	NIL
Total	65	17	12	08

Table: Hostel capacity in rooms

Academic Year →	2020-21	2021-22	2022-23
Vivekananda Hostel + T.H.	71	63	59
Saraswati Bhawan + T.H.	19	19	17
Total	90	82	76

Table: Occupancy details

Admission status in hostels

Batch →	2019-23	2020-24	2021-25	2022-26
First year	27	25	9	11
Lateral entry	4	2	1	2
Entry in 3rd/4th yr	0	0	0	2
CAD	1	0	0	0
Total	32	27	10	15

Table: Admitted students

Batch →	2019-23	2020-24	2021-25	2022-26
Boys	26	19	9	11
Girls	6	8	1	4
Total	32	27	10	15

Table: No. of Boys and Girls

Students Mess

- Dining hall area is 899 sq. ft. (approx) in V.H. and 483 sq. ft. in S.B. (approx).
- Mess menu decides by Mess committee members which include all wardens, student representatives both from Boys and Girls, and Mess contractor.
- Regular monthly meetings are conducted for resolving various issues related with mess.
- Food qualities are regularly checked by an approved committee members.
- A complaint register has been installed in mess for students to give feedback on daily foods.